

ポリマー総合カタログ

重水素モノマー試料 編

株式会社 ゼネラルサイエンスコーポレーション

はじめに

各ポリマーには出来る限り、CAS No. および構造式を記載しておりますが記載がないポリマーもございます。
また、予告なく製品自体の終了・容量・価格等の変更がございます。併せてご了承下さい。

製品の容量の多くは1gもしくは0.5g表記ですが、2g・5gでの容量もございます。

ご希望のポリマー試料の合成依頼も承っております。
物質名・構造式・分子量・分散度・（文献等）をお知らせください。
詳しくはお問合せ下さい。

記載されているカタログ番号は、同時にロット番号となります。
従いまして、記載されている型番が在庫終了になりますと同じスペックの製品は原則ご提供できない事になります。
代替品がある場合はお知らせ致しますので、お含み下さいますようお願い致します。

納期： ご下命後約1-2週間程度でお届けできます。

★ 海外送料等について:

従来は、品代金に海外送料を含めてのご案内でしたが、複数点ご購入のユーザー様には海外送料の重複の弊害がございました。

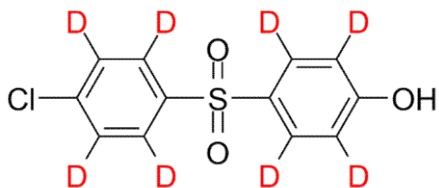
その弊害を解消するため、品代金と海外送料を分けて、ご注文点数に係わらず1回のご注文に付き海外送料1回分といたしました。

カタログに表記しております金額は海外送料を含んでいない金額です。

詳しくはお問い合わせ下さい。

DEUTERATED (4-CHLOROPHENYL-4'-HYDROXYPHENYL)-D8 SULFONE 重水素モノマー

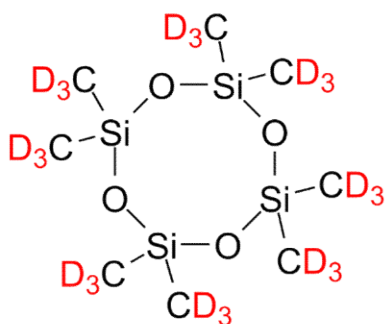
Deuterated Sulfone family



D8ClOHPS	$M_n \times 10^3$: 0.295	Mw/Mn: -	D>98%	0.5g
----------	---------------------------	----------	-------	------

DEUTERATED 1,3,5,7-OCTAMETHYL-D24 CYCLOTETRAISILOXANE 重水素モノマー

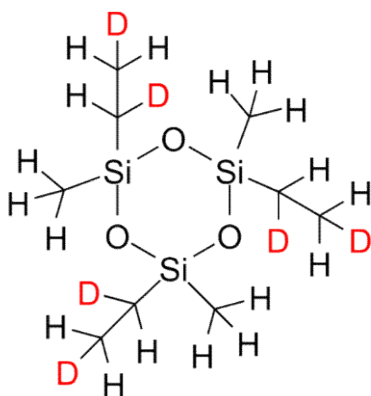
Deuterated Siloxane family



D24-D4	$M_n \times 10^3$: 0.321	Mw/Mn: 1.0		1g
--------	---------------------------	------------	--	----

DEUTERATED 1,3,5-TRIMETHYL-1,3,5-TRIETHYL-D6 CYCLOTTRISILOXANE 重水素モノマー

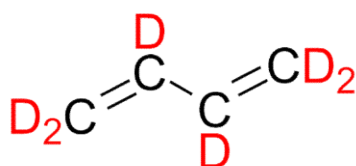
Deuterated Siloxane family



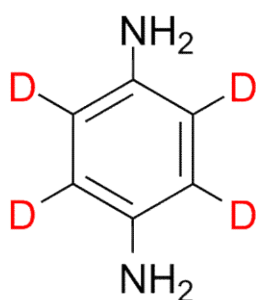
d6-EtMe-D3	$M_n \times 10^3$: 0.271	Mw/Mn:	Lot # P10907	1g
------------	---------------------------	--------	--------------	----

DEUTERATED 1,3-BUTADIENE-D6 重水素モノマー

Deuterated Alkene and Diene family



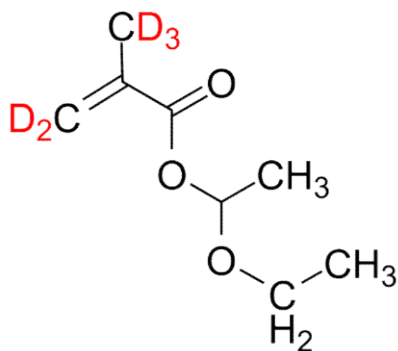
D6Bd	Mn x 10 ³ : 0.060	Mw/Mn : -	D=98%	1g
------	------------------------------	-----------	-------	----

DEUTERATED 1,4-PHENYLENEDIAMINE-D4 重水素モノマー Other deuterated monomer

D4PDA	Mn x 10 ³ : 0.112	Mw/Mn :	D>97% (Lot # P42986)	1g
-------	------------------------------	---------	----------------------	----

DEUTERATED 1-ETHOXYETHYL METHACRYLATE-D5 重水素モノマー

Deuterated Methacrylate



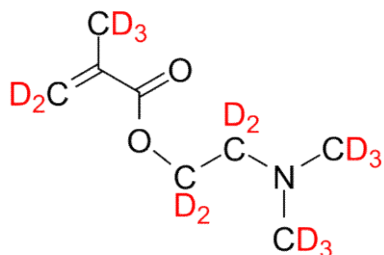
D5MAAEVE	Mn x 10 ³ : 0.163	Mw/Mn :		1g
----------	------------------------------	---------	--	----

DEUTERATED 2-(DIMETHYLAMINO)ETHYL METHACRYLATE-D15

重水素モノマー

Synonym: (N,N-Dimethyl-d6 amino)ethyl-d4 methacrylate-d5

Deuterated Methacrylate



D15DMAEMA

Mn x 10³: 0.172

Mw/Mn: -

D>98% (Lot # P19347,
P42716)

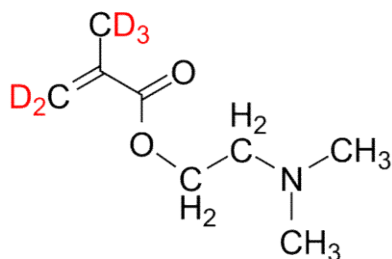
1g

DEUTERATED 2-(DIMETHYLAMINO)ETHYL METHACRYLATE-D5

重水素モノマー

Synonym: (N,N-Dimethylamino)ethyl methacrylate-d5

Deuterated Methacrylate



D5-DMAEMA

Mn x 10³: 0.162

Mw/Mn: -

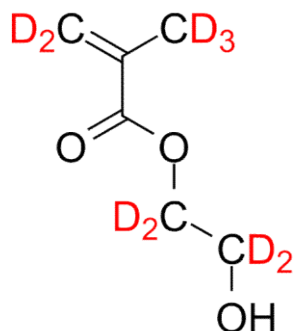
D>98%

1g

DEUTERATED 2-HYDROXYETHYL METHACRYLATE-D9

重水素モノマー

Deuterated Methacrylate



d9HEMA

Mn x 10³: 0.139

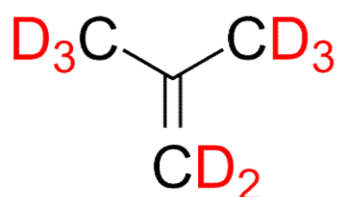
Mw/Mn:

Lot # P14833, P19817-3

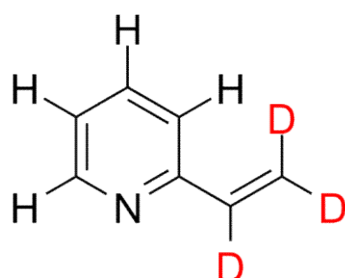
1g

DEUTERATED ISOBUTYLENE-D8 重水素モノマー

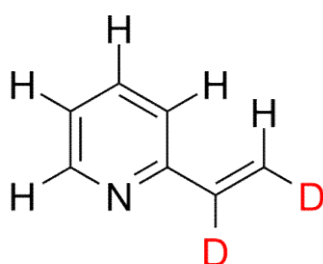
Deuterated Alkene and Diene family



D8Ib	Mn x 10 ³ : 0.064	Mw/Mn : -	99%	1g
------	------------------------------	-----------	-----	----

DEUTERATED 2-VINYLPYRIDINE-A,B,B-D3 重水素モノマー Deuterated Vinylpyridine family

2VP-d3	Mn x 10 ³ : 0.108	D: 98%; Purity: 98%; stabilized with BHT (Lot # 16121)	1g
2VP--d3	Mn x 10 ³ : 0.108	D: 98%; Purity: 93% (Lot # 16121F1)	1g
2VP- d3	Mn x 10 ³ : 0.108	D: 98%; Purity:90% (Lot # P14786)	1g

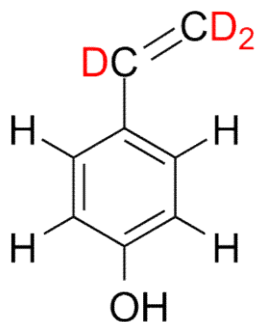
DEUTERATED 2-VINYLPYRIDINE-A,B-D2 重水素モノマー Deuterated Vinylpyridine family
Stabilized with BHT.

2VP-d2	Mn x 10 ³ : 0.107	Mw/Mn :	Lot # P14781	1g
--------	------------------------------	---------	--------------	----

DEUTERATED 4-HYDROXYSTYRENE-A,B,B-D3

重水素モノマー Deuterated Styrene and its derivative

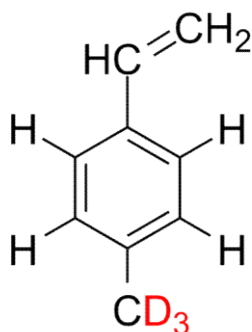
Synonyms: 4-Vinyl-d3-phenol; p-Vinyl(d3)phenol



D3-4OHS	$M_n \times 10^3$: 0.123	Mw/Mn :	D=98%	1g
---------	---------------------------	---------	-------	----

DEUTERATED 4-METHYL-D3 STYRENE

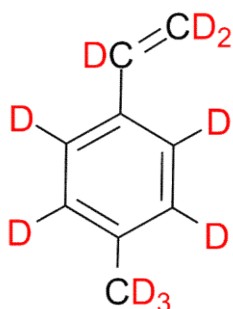
重水素モノマー Deuterated Styrene and its derivative



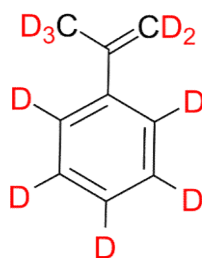
D3-4MeS	$M_n \times 10^3$: 0.121	Mw/Mn :	D=98%	1g
---------	---------------------------	---------	-------	----

DEUTERATED 4-METHYLSTYRENE-D10

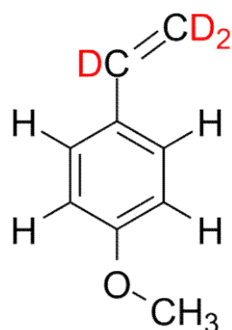
重水素モノマー Deuterated Styrene and its derivative



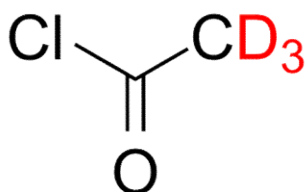
D10-4MeS	$M_n \times 10^3$: 0.128	Mw/Mn :	D>95%	1g
----------	---------------------------	---------	-------	----

DEUTERATED A-METHYLSTYRENE-D10 重水素モノマー Deuterated Styrene and its derivative

D10-aMeS	Mn x 10 ³ : 0.128	Mw/Mn :	D=98%	1g
----------	------------------------------	---------	-------	----

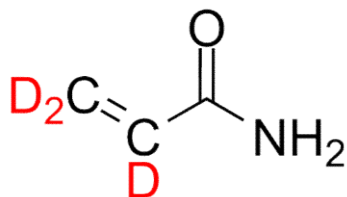
DEUTERATED 4-VINYLANISOLE-A,B,B-D3 重水素モノマー Deuterated Styrene and its derivative

4VAS-d3	Mn x 10 ³ : 0.137	Mw/Mn :	Lot # P14790	1g
---------	------------------------------	---------	--------------	----

DEUTERATED ACETYL-D3 CHLORIDE 重水素モノマー

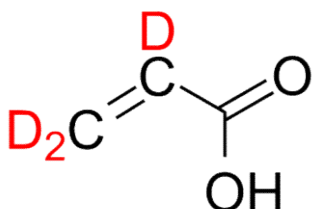
d3ACCl	Mn x 10 ³ : 0.081	Mw/Mn :		5g
--------	------------------------------	---------	--	----

DEUTERATED ACRYLAMIDE-D3 重水素モノマー
Deuterated Acrylamide and Methacrylamide family



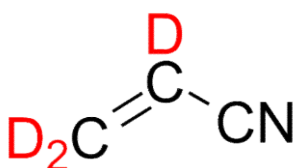
D3AMD	Mn x 10 ³ : 0.074	D=98% (Lot # P19228)	1g
-------	------------------------------	----------------------	----

DEUTERATED ACRYLIC ACID-D3 重水素モノマー
Deuterated Acrylic and Methacrylic acid



D3AA-95	Mn x 10 ³ : 0.075	D=95% (Lot # P14849)	1g
D3AA-98	Mn x 10 ³ : 0.075	D=98% (Lots # P14850, P41344, P41344A)	1g

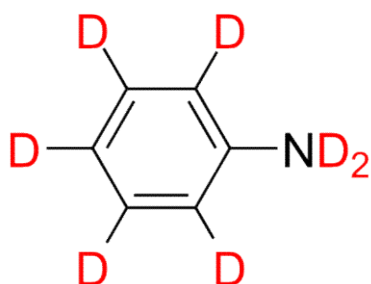
DEUTERATED ACRYLONITRILE-D3 重水素モノマー
Deuterated Acrylonitrile and Methacrylonitrile



D3AN	Mn x 10 ³ : 0.056	Mw/Mn : -	D=98%	1g
------	------------------------------	-----------	-------	----

DEUTERATED ANILINE-D7

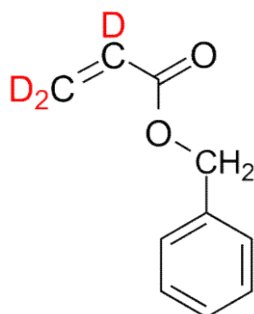
CAS Number : 14545-23-4



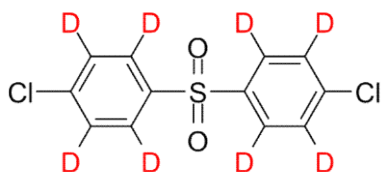
d7-AN	Mn x 10 ³ : 0.100	Mw/Mn :	Lot # P14888	2g
-------	------------------------------	---------	--------------	----

DEUTERATED BENZYL ACRYLATE-D3 重水素モノマー

Deuterated Acrylate



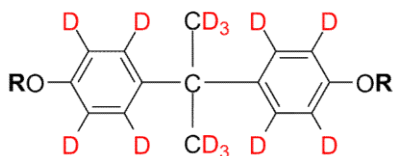
d3BZA	Mn x 10 ³ : 0.165	Mw/Mn :		0.5g
-------	------------------------------	---------	--	------

DEUTERATED 4,4'-BIS(CHLOROPHENYL)-D8 SULFONE 重水素モノマー Deuterated Sulfone family

D8Cl2PHS	Mn x 10 ³ : 0.277	Mw/Mn : -	D=98%	1g
----------	------------------------------	-----------	-------	----

DEUTERATED BISPHENOL A (D14) 重水素モノマー Deuterated Bisphenol A

Synonym: 2,2-Bis(4-hydroxyphenyl)propane-d14/d16

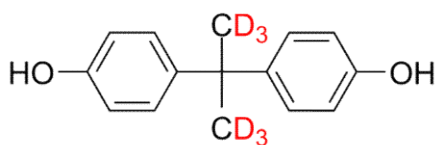


R = H or D

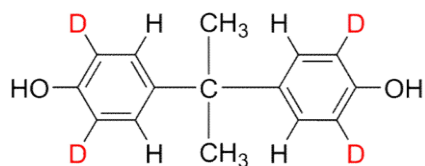
D14BPA-1	Mn x 10 ³ : 0.24	Mw/Mn : -	D=98% (Lot # P14853, P60265)	1g
D14BPA-2	Mn x 10 ³ : 0.24	Mw/Mn : -	D=80%	1g
D14BPA-3	Mn x 10 ³ : 0.24	Mw/Mn : -	D=10%	1g

DEUTERATED BISPHENOL A (DIMETHYL-D6) 重水素モノマー Deuterated Bisphenol A

Synonym: 2,2-Bis(4-hydroxyphenyl)propane-d6



D6BPA	Mn x 10 ³ : 0.234	Mw/Mn : -	D>95%	1g
-------	------------------------------	-----------	-------	----

DEUTERATED BISPHENOL A (DIPHENYL-D4) 重水素モノマー Deuterated Bisphenol A

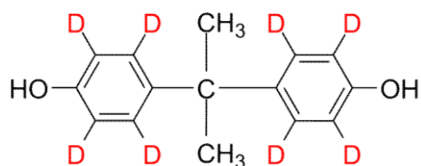
CAS Number : 347841-41-2

Synonym: 2,2-Bis(4-hydroxyphenyl)propane-d4

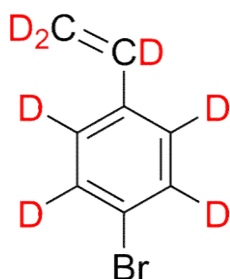
D4BPA	Mn x 10 ³ : 0.232	Mw/Mn : -	D>97% (Lot # P60054)	1g
-------	------------------------------	-----------	----------------------	----

DEUTERATED BISPHENOL A (DIPHENYL-D8)**重水素モノマー** Deuterated Bisphenol A

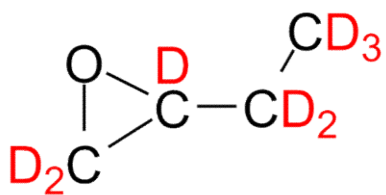
Synonym: 2,2-Bis(4-hydroxyphenyl)propane-d8



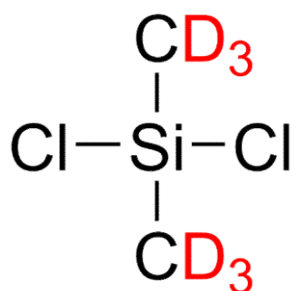
D8BPA	$M_n \times 10^3$: 0.236	Mw/Mn: -	D>95%	1g
-------	---------------------------	----------	-------	----

DEUTERATED 4-BROMOSTYRENE-D7 重水素モノマー Deuterated Styrene and its derivative

D7-BrS	$M_n \times 10^3$: 0.19	Mw/Mn: -	Lot # P60174	0.5g
--------	--------------------------	----------	--------------	------

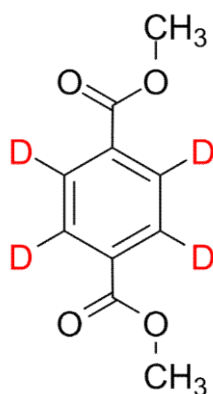
DEUTERATED BUTYLENE OXIDE-D8 重水素モノマー Deuterated Oxirane family

D8BO	$M_n \times 10^3$: 0.080	Mw/Mn: -	D=95%	1g
------	---------------------------	----------	-------	----

DEUTERATED DICHLORODIMETHYLSILANE-D6

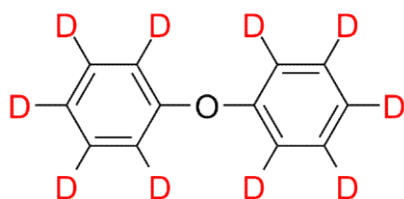
May contain benzene (up to 30%).

D6DCSi	Mn x 10 ³ : 0.135	Mw/Mn : -	D>95%	1g
--------	------------------------------	-----------	-------	----

DEUTERATED DIMETHYL TEREPHTHALATE-2,3,5,6-D4

CAS Number : 74079-01-9

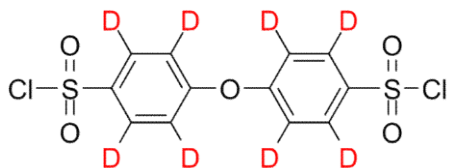
D4DMT	Mn x 10 ³ : 0.198	Mw/Mn : -	D=98% (Lot # P42671)	1g
-------	------------------------------	-----------	----------------------	----

DEUTERATED DIPHENYL-D10 ETHER

D10DPHE	Mn x 10 ³ : 0.18	Mw/Mn :	D=98%	1g
---------	-----------------------------	---------	-------	----

DEUTERATED DIPHENYL-D8 ETHER 4,4'-DISULFONYL CHLORIDE 重水素モノマー

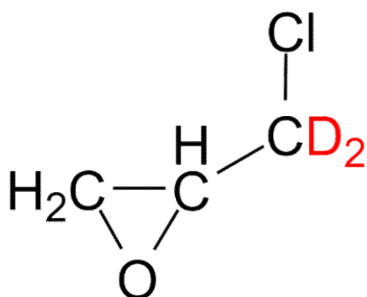
Other deuterated monomer



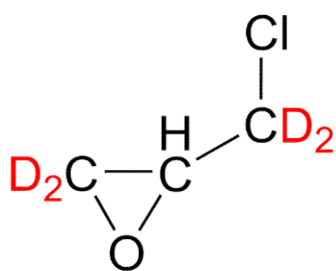
D8DPEDSC	$M_n \times 10^3$: 0.375	Mw/Mn : -	D=95%	0.5g
----------	---------------------------	-----------	-------	------

DEUTERATED EPICHLOROHYDRIN-D2 重水素モノマー Deuterated Epichlorohydrin

CAS Number : 69533-54-6 (d5-labelled); 106-89-8 (unlabelled)

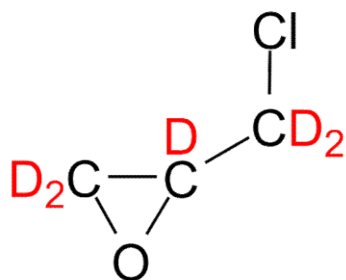


D2ECH	$M_n \times 10^3$: 0.095	Mw/Mn : -	D=98%	1g
-------	---------------------------	-----------	-------	----

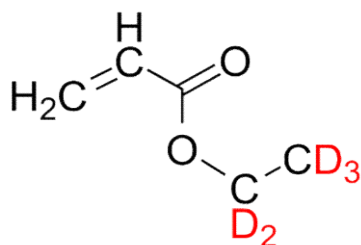
DEUTERATED EPICHLOROHYDRIN-D4 重水素モノマー Deuterated Epichlorohydrin

CAS Number : 69533-54-6 (d5-labelled); 106-89-8 (unlabelled)

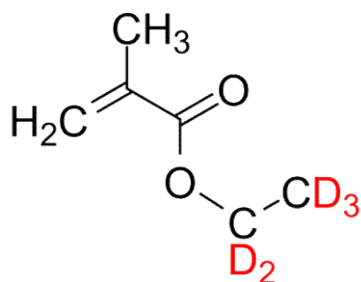
D4ECH	$M_n \times 10^3$: 0.097	Mw/Mn : -	D>98% (lot # P60146)	1g
-------	---------------------------	-----------	----------------------	----

DEUTERATED EPICHLOROHYDRIN-D5 重水素モノマー Deuterated Epichlorohydrin

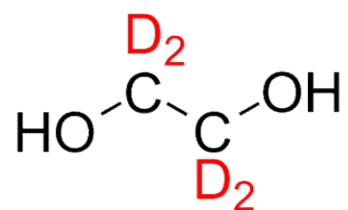
D5ECH	Mn x 10 ³ : 0.098	Mw/Mn : -	D>98% (lot # P42043)	1g
-------	------------------------------	-----------	----------------------	----

DEUTERATED ETHYL-D5 ACRYLATE 重水素モノマー
Deuterated Acrylate

D5EA	Mn x 10 ³ : 0.105	D=98% (lot # P10813, P10813A)		1g
------	------------------------------	-------------------------------	--	----

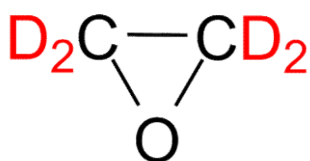
DEUTERATED ETHYL-D5 METHACRYLATE 重水素モノマー Deuterated Methacrylate

D5EMA	Mn x 10 ³ : 0.119	Mw/Mn : -	D= 98%	1g
-------	------------------------------	-----------	--------	----

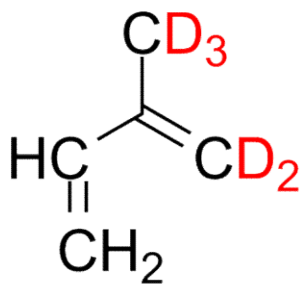
DEUTERATED ETHYLENE-D4 GLYCOL

CAS Number : 2219-51-4

D4EG	Mn x 10 ³ : 0.066	D=98%, lot # P40711	1g
------	------------------------------	---------------------	----

DEUTERATED ETHYLENE OXIDE-D4 重水素モノマー Deuterated Oxirane family

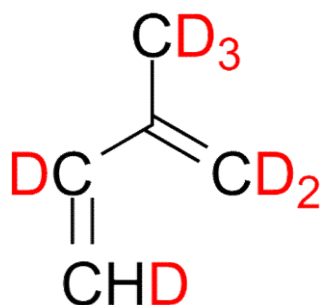
D4EO	Mn x 10 ³ : 0.048	Mw/Mn : -	D=98%	1g
------	------------------------------	-----------	-------	----

DEUTERATED ISOPRENE-D5 重水素モノマー
Deuterated Alkene and Diene family

d5Ip	Mn x 10 ³ : 0.073	Mw/Mn :	D=98%	1g
------	------------------------------	---------	-------	----

DEUTERATED ISOPRENE-D7 重水素モノマー

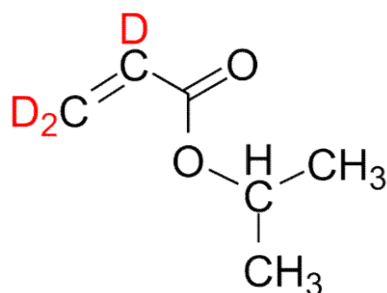
Deuterated Alkene and Diene family



d7IP	$M_n \times 10^3$: 0.075	Mw/Mn :	1g
------	---------------------------	---------	----

DEUTERATED ISOPROPYL ACRYLATE-D3 重水素モノマー

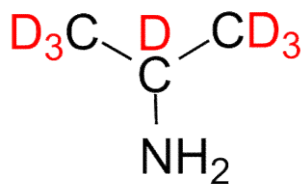
Deuterated Acrylate



d3IPrA	$M_n \times 10^3$: 0.117	Mw/Mn :	0.5g
--------	---------------------------	---------	------

DEUTERATED ISOPROPYL-D7-AMINE

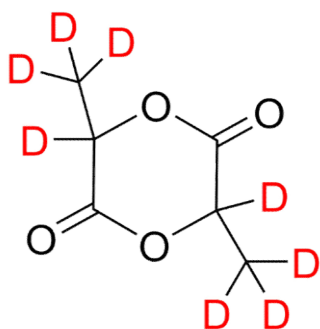
Synonym: 2-Aminopropane-d7



d7-IPA	$M_n \times 10^3$: 0.066	D>98% (Lot # P16138)	1g
--------	---------------------------	----------------------	----

新製品: DEUTERATED LACTIDE-D8 重水素モノマー Deuterated Lactide and Lactone family

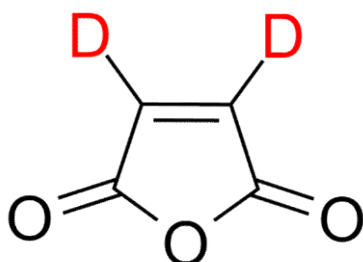
Synonym: 3,6-Dimethyl-1,4-dioxane-2,5-dione-d8



d7-IPA	$M_n \times 10^3$: 0.152	D>98% (Lot # P16138)	0.5g
--------	---------------------------	----------------------	------

DEUTERATED MALEIC ANHYDRIDE-D2 重水素モノマー Other deuterated monomer

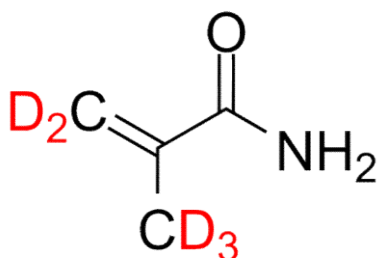
CAS Number : 33225-51-3



D2MAH	$M_n \times 10^3$: 0.100	Mw/Mn : -	D=98%	1g
-------	---------------------------	-----------	-------	----

DEUTERATED METHACRYLAMIDE-D5 重水素モノマー

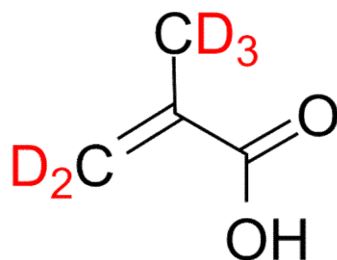
Deuterated Acrylamide and Methacrylamide family



d5-MAMD	$M_n \times 10^3$: 0.090	Mw/Mn :	D>95% (lot # P42020)	1g
d5MAMD	$M_n \times 10^3$: 0.090	Mw/Mn :	D=98% (lot # P11000)	1g

DEUTERATED METHACRYLIC ACID-D5 重水素モノマー

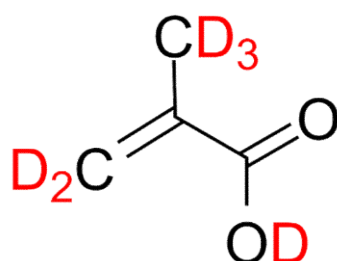
Deuterated Acrylic and Methacrylic acid



D5MAA	Mn x 10 ³ : 0.091	Mw/Mn : 1	Lot # P60033 (D>99%), P42355 (D>98%)	1g
-------	------------------------------	-----------	---	----

DEUTERATED METHACRYLIC ACID-D6 重水素モノマー

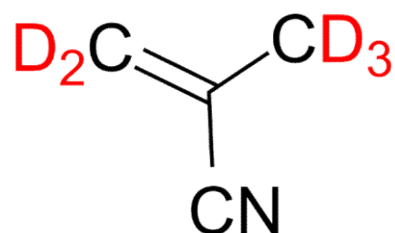
Deuterated Acrylic and Methacrylic acid



D6MAA	Mn x 10 ³ : 0.092	Mw/Mn : -	D=98%	1g
-------	------------------------------	-----------	-------	----

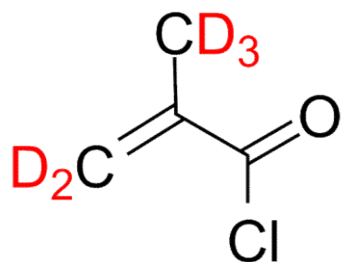
DEUTERATED METHACRYLONITRILE-D5 重水素モノマー

Deuterated Acrylonitrile and Methacrylonitrile



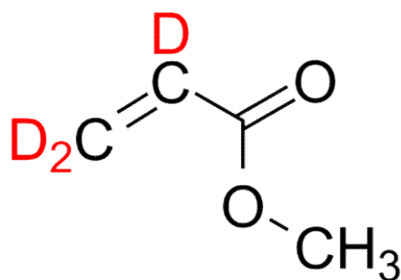
d5MACN	Mn x 10 ³ : 0.072	Mw/Mn :		0.5g
--------	------------------------------	---------	--	------

DEUTERATED METHACRYLOYL CHLORIDE-D5 重水素モノマー
Deuterated Methacrylate



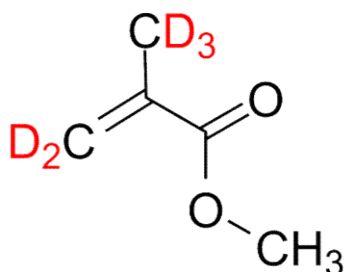
D5MACl	Mn x 10 ³ : 0.109	Mw/Mn : -	D>98% (Lot # P14467, P42399)	1g
--------	------------------------------	-----------	------------------------------	----

DEUTERATED METHYL ACRYLATE-D3 重水素モノマー Deuterated Acrylate
May contain traces of THF.



D3MA-vinyl	Mn x 10 ³ : 0.089	Mw/Mn :	Lot # P10769, P42348 (D>98%)	1g
------------	------------------------------	---------	------------------------------	----

DEUTERATED METHYL METHACRYLATE-D5 重水素モノマー
CAS Number : 55935-46-1 Deuterated Methacrylate

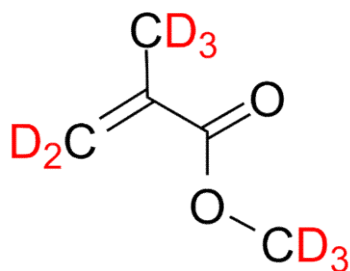


D5MMA	Mn x 10 ³ : 0.119	Mw/Mn : -	D=98%	1g
-------	------------------------------	-----------	-------	----

DEUTERATED METHYL METHACRYLATE-D8

重水素モノマー Deuterated Methacrylate

CAS Number : 55935-46-1



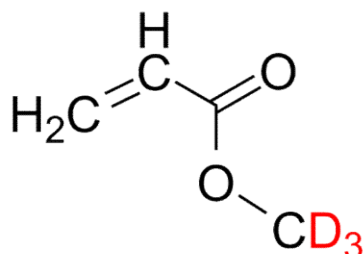
D8MMA	Mn x 10 ³ : 0.108	Mw/Mn : -	D=98%	1g
-------	------------------------------	-----------	-------	----

DEUTERATED METHYL-D3 ACRYLATE

重水素モノマー

Deuterated Acrylate

May contain traces of hydrocarbon.



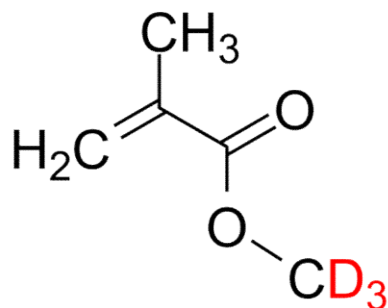
D3MA-ester	Mn x 10 ³ : 0.089	D=98% (Lot # P10806A, P42325, P42735, P42735A)	1g
------------	------------------------------	--	----

DEUTERATED METHYL-D3 METHACRYLATE

重水素モノマー

Deuterated Methacrylate

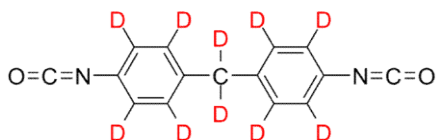
CAS Number : 35777-12-9



D3MMA	Mn x 10 ³ : 0.103	Mw/Mn : -	D=99% (lot # P60038, P42176)	1g
-------	------------------------------	-----------	------------------------------	----

DEUTERATED 4,4'-METHYLENEBIS(PHENYL ISOCYANATE)-D10 重水素モノマー

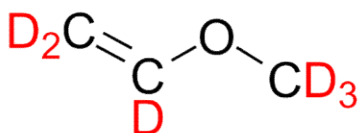
Other deuterated monomer



d8-Methylene2PhNCO	$M_n \times 10^3$: 0.256	Purity=98% (Lot # P14865)	0.1g
--------------------	---------------------------	---------------------------	------

DEUTERATED METHYL VINYL ETHER-D6 重水素モノマー

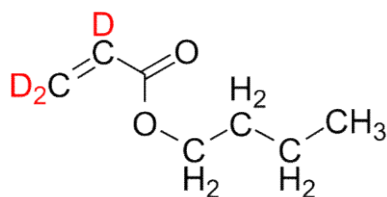
Deuterated Vinyl ether, ester, halide family



D6MVE	$M_n \times 10^3$: 0.064	M_w/M_n : -	D=98%	1g
-------	---------------------------	---------------	-------	----

DEUTERATED N-BUTYL ACRYLATE-D3 重水素モノマー

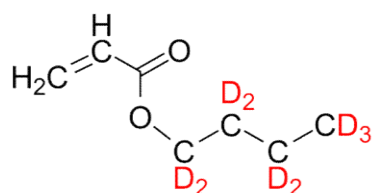
Deuterated Acrylate



D3nBuA	$M_n \times 10^3$: 0.131	M_w/M_n : -	Lot # P41053	1g
--------	---------------------------	---------------	--------------	----

DEUTERATED N-BUTYL-D9 ACRYLATE 重水素モノマー

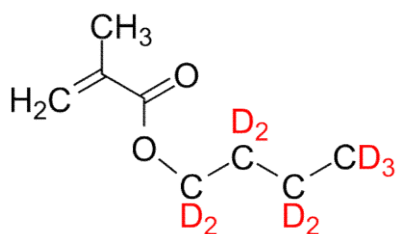
Deuterated Acrylate



d9nBuA	Mn x 10 ³ : 0.217	Mw/Mn : -	Lot # P14837, P18612	0.5g
--------	------------------------------	-----------	-------------------------	------

DEUTERATED N-BUTYL-D9 METHACRYLATE 重水素モノマー

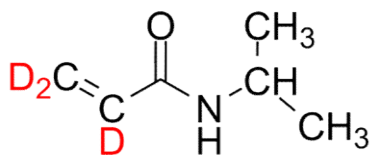
Deuterated Methacrylate



D9nBuMA	Mn x 10 ³ : 0.151	Mw/Mn : -	D=98%	1g
---------	------------------------------	-----------	-------	----

DEUTERATED N-ISOPROPYL ACRYLAMIDE-D3 重水素モノマー

Deuterated Acrylamide and Methacrylamide family

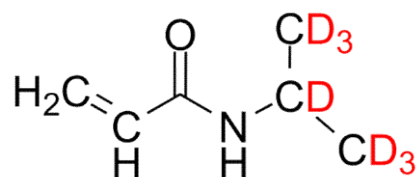


d3-NIPAM	Mn x 10 ³ : 0.116	Mw/Mn :		1g
----------	------------------------------	---------	--	----

DEUTERATED N-ISOPROPYL-D7 ACRYLAMIDE 重水素モノマー

CAS Number : 1219803-32-3

Deuterated Acrylamide and Methacrylamide family



D7NIPAM

Mn x 10³ : 0.12

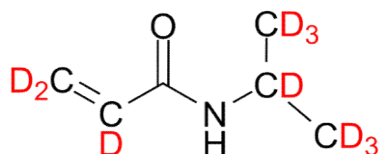
Mw/Mn :

D>98% (Lot
P41238)

1g

DEUTERATED N-ISOPROPYL ACRYLAMIDE-D10 重水素モノマー

Deuterated Acrylamide and Methacrylamide family



NIPAM-d10

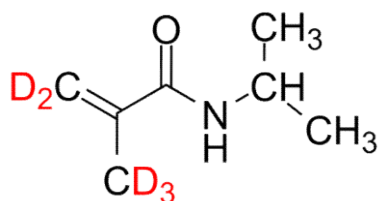
Mn x 10³ : 0.123

Mw/Mn :

0.5g

DEUTERATED N-ISOPROPYL METHACRYLAMIDE-D5 重水素モノマー

Deuterated Acrylamide and Methacrylamide family



d5-NIPMAMD

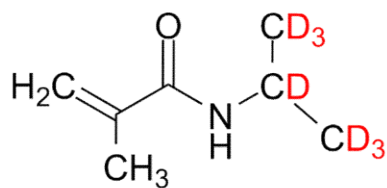
Mn x 10³ : 0.132

Mw/Mn :

0.5g

DEUTERATED N-ISOPROPYL METHACRYLAMIDE-D7 重水素モノマー

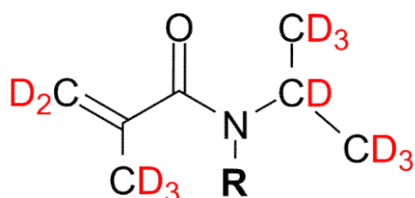
Deuterated Acrylamide and Methacrylamide family



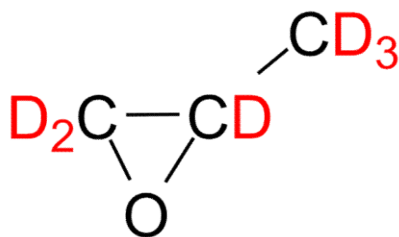
d7-NIPMAMD	$M_n \times 10^3 : 0.132$	Mw/Mn :	Lot # 16131, P41239	0.5g
------------	---------------------------	---------	------------------------	------

DEUTERATED N-ISOPROPYL METHACRYLAMIDE-D12 重水素モノマー

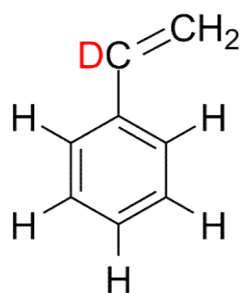
Deuterated Acrylamide and Methacrylamide family

**R = H or D**

d12-NIPMAMD	$M_n \times 10^3 : 0.14$	Mw/Mn :	Lot # P16131A	0.5g
-------------	--------------------------	---------	---------------	------

DEUTERATED PROPYLENE OXIDE-D6 重水素モノマー Deuterated Oxirane family

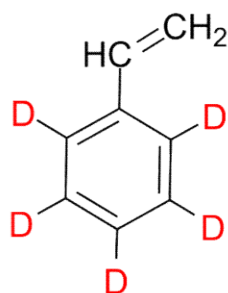
D6PO	$M_n \times 10^3 : 0.064$	Mw/Mn :	D=98% (Lot # P42812)	1g
------	---------------------------	---------	-------------------------	----

DEUTERATED STYRENE-A-D1 重水素モノマー Deuterated Styrene and its derivative

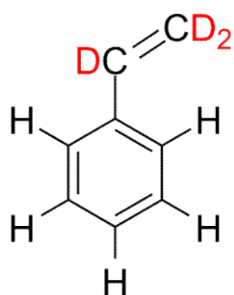
D1S-83	Mn x 10 ³ : 0.105	Mw/Mn :	D>83% (Lot # P14827)	1g
D1S-99	Mn x 10 ³ : 0.105	Mw/Mn :	D=99% (Lot # P60193)	1g

DEUTERATED STYRENE-2,3,4,5,6-D5 重水素モノマー Deuterated Styrene and its derivative

CAS Number : 5161-29-5

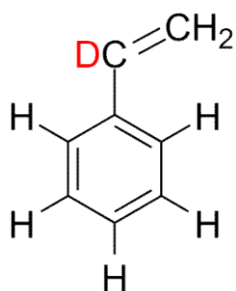


D5S	Mn x 10 ³ : 0.109	D=98%, Lot # P16201, P16356	1g
-----	------------------------------	-----------------------------	----

DEUTERATED STYRENE-A,B,B-D3 重水素モノマー Deuterated Styrene and its derivative

Comments: Comments Column: Isotope Enrichment

D3S	Mn x 10 ³ : 0.107	Mw/Mn : 1	D=98%	1g
-----	------------------------------	-----------	-------	----

DEUTERATED STYRENE-A-D1 重水素モノマー Deuterated Styrene and its derivative

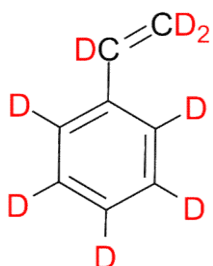
CAS Number : 1193-80-2

D1S-83	Mn x 10 ³ : 0.105	D>83% (Lot # P14827)	1g
D1S-99	Mn x 10 ³ : 0.105	D=99% (Lot # P60193)	1g

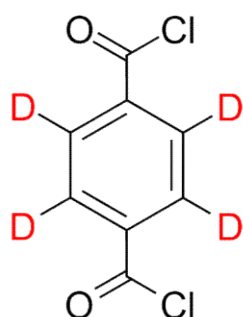
DEUTERATED STYRENE-D8 重水素モノマー Deuterated Styrene and its derivative

CAS Number : 19361-62-7

Stabilized with 4-tert-Butylcatechol (~300 ppm).



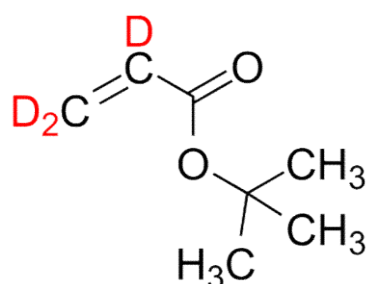
d8S	Mn x 10 ³ : 0.112	D>98% (Lot # P18967)	1g
Sd8	Mn x 10 ³ : 0.112	D>96% (Lot # P60267)	1g

DEUTERATED TEREPHTHALOYL-D4 CHLORIDE 重水素モノマー Deuterated Terephthalate family

D4TPCL	Mn x 10 ³ : 0.207	Mw/Mn :	D=98% (Lot # P16232)	1g
--------	------------------------------	---------	----------------------	----

DEUTERATED TERT-BUTYL ACRYLATE-D3 重水素モノマー

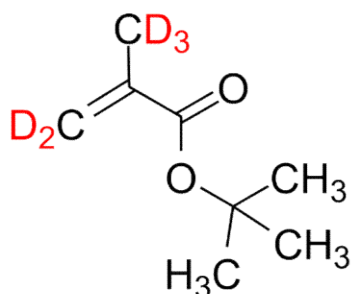
Deuterated Acrylate



d3-tBuA	Mn x 10 ³ : 0.131	Lot # P14911,P19515	1g
---------	------------------------------	---------------------	----

DEUTERATED TERT-BUTYL METHACRYLATE-D5 重水素モノマー

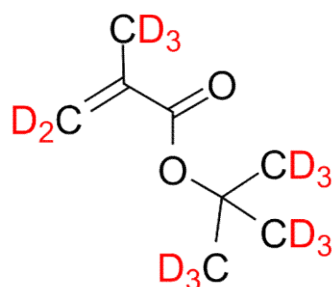
Deuterated Methacrylate



D5tBuMA	Mn x 10 ³ : 0.147	Mw/Mn : -	D=98%	1g
---------	------------------------------	-----------	-------	----

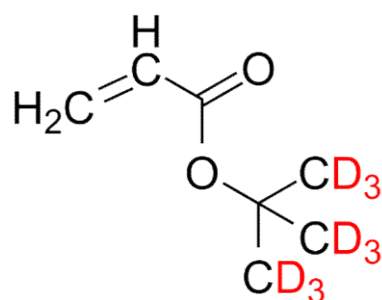
DEUTERATED TERT-BUTYL METHACRYLATE-D14 重水素モノマー

Deuterated Methacrylate



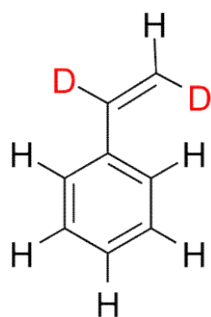
D14tBuMA	Mn x 10 ³ : 0.156	Lot # P14904, P41315; D=98%	1g
----------	------------------------------	--------------------------------	----

DEUTERATED TERT-BUTYL-D9 ACRYLATE 重水素モノマー
Deuterated Acrylate



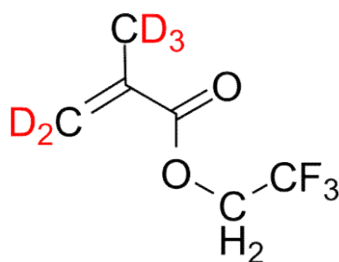
d9-tBuA	Mn x 10 ³ : 0.137	Mw/Mn :	1g
---------	------------------------------	---------	----

DEUTERATED TRANS-STYRENE-A,B-D2 重水素モノマー Deuterated Styrene and its derivative



trans-d2S	Mn x 10 ³ : 0.106	Mw/Mn :	1g
-----------	------------------------------	---------	----

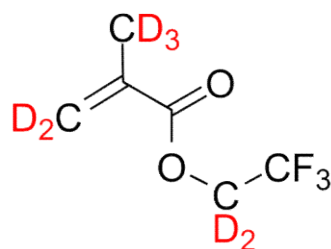
DEUTERATED TRIFLUOROETHYL METHACRYLATE-D5 重水素モノマー Deuterated Methacrylate



D5TFEMA	Mn x 10 ³ : 0.173	Mw/Mn : -	D>95%	1g
---------	------------------------------	-----------	-------	----

DEUTERATED TRIFLUOROETHYL METHACRYLATE-D7

重水素モノマー Deuterated Methacrylat



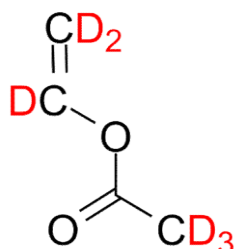
D7TFEMA	Mn x 10 ³ : 0.175	Mw/Mn : -	D>95%	1g
---------	------------------------------	-----------	-------	----

DEUTERATED VINYL ACETATE-D6

重水素モノマー

Deuterated Vinyl ether, ester, halide family

CAS Number : 189765-98-8

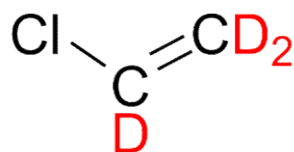


D6VAC	Mn x 10 ³ : 0.092	D>99% (Lot # P19823-d6VAc)		0.5g
-------	------------------------------	----------------------------	--	------

DEUTERATED VINYL-D3 CHLORIDE

重水素モノマー

Deuterated Vinyl ether, ester, halide family



D3VC	Mn x 10 ³ : 0.065	Mw/Mn :	D=98%	1g
------	------------------------------	---------	-------	----